

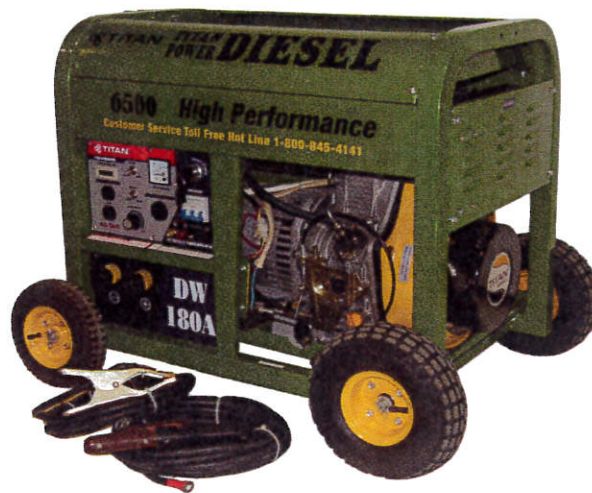
# TITAN

I N D U S T R I A L

P.O.Box 791, Travelers Rest, S.C. 29690

Phone 864-834-7212

Service/Replacement Parts 800-845-4141



## OWNER'S MANUAL

### MODEL TG 6500DW Diesel Generator/Welder

The Emission Control System for this generator is warranted for standards set by the Environment Protection Agency.

#### **IMPORTANT!**

It is extremely important to read and understand the entire contents of this Owner's Manual for the Titan Industrial Model TG6500DW before attempting to operate the generator/welder. This is a diesel engine powered, industrial strength generating unit of electrical power. The diesel engine and the generator/welder are both potentially extremely hazardous and could cause physical injury or even death if improperly used.

#### **WARNING!**

**Do Not Operate Equipment until reading & understanding Owner's Manual!**  
**Disconnect all loads before starting or stopping generator.**  
**Allow to run for a few minutes with no load before stopping.**

**IMPORTANT !  
READ FIRST**

# **TITAN INDUSTRIAL**

## **OWNER'S MANUAL MODEL TG 6500DW Diesel Generator/ Welder**

It is extremely important to read and understand the entire contents of this Owner's Manual for the Titan Industrial- Model TG 6500DW before attempting to operate the generator/welder. This is a diesel engine powered, industrial strength generating unit of electrical power. The diesel engine and the generator/welder are both potentially extremely hazardous and could cause physical injury or even death if improperly used.

TITAN INDUSTRIAL shall not be responsible for any consequences resulting from improper use of this equipment. The operator is required to read the entire contents of this manual before attempting to operate the unit. If the operator does not completely understand the instructions and all of the hazards of operating this unit after reading this manual, he must call the factory at 1-800-845-4141 to answer these questions to his complete satisfaction before proceeding.

**READ AND COMPLETELY UNDERSTAND** entire contents of this Owner's Manual and become familiar with the unit before attempting to start using this equipment! It is your responsibility to know its applications, limitations, and hazards! Call the factory at 1-800-845-4141 with any questions.

**FOR OUTDOOR USE ONLY!** Never use this unit inside any enclosure including the generator compartment of a recreation vehicle (RV) or inside any building. No modifications will eliminate the danger of possible carbon monoxide poisoning, fire, or explosion.

**TWO (2) FEET OF CLEARANCE** on all sides is required even while using outdoors.

**GENERATOR MUST BE ISOLATED FROM ELECTRIC UTILITY** by opening the electrical systems main circuit breaker or main switch if the generator is used for backup power. FAILURE TO ISOLATE THIS GENERATOR FROM THE POWER UTILITY MAY RESULT IN INJURY OR DEATH TO ELECTRIC UTILITY WORKERS AND CAUSE DAMAGE TO THE EQUIPMENT. CONSULT YOUR LOCAL POWER COMPANY FOR RULES AND REGULATIONS.

**This Manual contains information to ensure your safety and to prevent any equipment problems. Various terms such as 'WARNING', 'CAUTION', 'DANGER', 'IMPORTANT', and the SYMBOL → are all used to signify information that is essential for the operator of this equipment to understand and to practice!**

## → SAFETY ←

This generator/welder was designed for specific applications. DO NOT attempt to modify the unit in any way or use it for any application that it was not designed to do. Ask the dealer or contact the factory if you have any questions concerning the generator's application.

Warnings and cautions in this manual and on decals and tags on the unit are not all inclusive. It would be impossible to anticipate every circumstance that might involve a hazard. Handling, operating, or servicing this unit by any procedure not recommended by the manufacturer may render this equipment unsafe and may pose a threat to you or to others.

- The unit produces a very powerful voltage that can cause extremely dangerous electrical shock. Avoid contact with bare wires, terminals, etc. never permit an unqualified person to operate or service the generator.
- Never handle any kind of electrical cord or device while standing in water, while barefoot or with wet hands or when feet are wet. Dangerous electrical shock could result.
- The National Electric Code requires that the frame and external conductive parts be properly connected to an approved earth ground. Local electrical codes may vary. Check with an electrician for local grounding requirements.
- Use a ground fault circuit interrupter in any damp or highly conductive area such as metal decking or steel work.
- Do not use worn, bare, frayed or otherwise damaged electrical cords or wiring with the generator. A defective cord may result in electrical shock or may cause damage to equipment.
- Do not expose unit to excessive moisture, dirt or corrosive vapors. Unit must be operated on a level surface.
- Comply with all laws regulating the storage and handling of diesel fuel. Diesel fuel is highly flammable and explosive. Avoid spilling diesel fuel on a hot engine. Do not allow smoking, open flames, sparks or heat in the vicinity while handling diesel fuel.
- Do not overfill the fuel tank. Always allow room for diesel fuel expansion. Diesel fuel could overflow and cause fire or explosion if tank is overfilled. Allow for a 20 minute cool down before refueling. Never refuel tank while engine is running.
- Only operate this unit outside with adequate ventilation. This generator's diesel engine exhaust produces carbon monoxide gas that can cause unconsciousness or even death.
- Never store a generator with fuel in the tank where diesel fuel vapors could be ignited by a flame, spark, or pilot light from an appliance such as a furnace, water heater, or clothes dryer.
- Always allow a minimum of 2 feet of clearance on all sides for ventilation while unit is operating. Allow 2 feet of clearance from all combustibles.
- Generator must always be stopped or started with all loads unconnected. Start the engine and let it stabilize before connecting any loads. Disconnect all loads before shutting down the generator.
- Never insert any object through the cooling slots of the engine. You could damage the unit or cause injury.
- **NEVER OPERATE THE GENERATOR:**
  - In rain
  - In an enclosed compartment
  - If connected devices overheat
  - If electrical output is lost
  - If engine or generator sparks
  - If flame or smoke is observed
  - If unit vibrates excessively

**CAUTION!** The engine exhaust contains chemicals known to the State of California to cause cancer, birth defects, or other reproductive harm.

**CAUTION!** If it is your first time starting the generator, allow it to run for 30 minutes before connecting electrical loads. This is for wet seating purposes

# IMPORTANT ! IMPORTANT ! IMPORTANT ! IMPORTANT ! IMPORTANT

## BEFORE STARTING THE ENGINE

### CHECK AND/OR FILL OIL

#### WARNING!

DO NOT ATTEMPT TO START THE ENGINE BEFORE FILLING WITH OIL!

**Titan Industrial  
Recommends  
ONLY  
Using Rotella T  
Multigrade  
15W - 40  
engine oil.**

**\* Capacity 1.2 qts.**

#### Fill with oil

- Place generator on a level surface.
- Clean area around oil fill opening.
- Remove the dipstick.
- Wipe the dipstick clean.
- Pour oil in until it reaches the FULL mark on dipstick.
- **DO NOT OVERFILL!**
- **CLOSE OIL CAP!**

#### Note:

The generator's revolving field rides on a sealed ball bearing that requires no additional lubrication for the life of the bearing.

### CHECK AND/OR FILL DIESEL

#### WARNING!

Do not overfill! Leave room for fuel expansion. Never fill fuel indoors. Never fill fuel when engine is hot or running. Do not smoke or fill fuel near an open flame or sparks.

#### Fill with diesel fuel only

- Use diesel fuel only.
- Clean area around fuel cap.
- Remove fuel cap.
- Add diesel fuel to fuel tank.
- DO NOT overfill. Do not fill above the red plug inside the fuel tank filter (this allows for fuel expansion).
- Replace fuel cap.
- Wipe up any spilled diesel fuel.

#### Note:

Because this is a diesel engine, frequent oil and filter changes are required.

### CHECK AND/OR REPLACE FILTER

#### WARNING!

Do not clean filter with any type of detergent.

#### Check air filter

- Remove cover panel. Loosen wingnut and remove air filter cover.
- Never wash air cleaner with any kind of detergent or cleaning solvent.
- Air filter should be changed if engine performance decreases or color of exhaust changes.
- Never run engine without air filter. This can cause rapid engine wear.

Figure #2 - Air Filter Housing



### CHECK AND/OR ADD BATTERY FLUID

#### WARNING!

Do not try to start engine with a "dry" battery! This cause irreversible damage to the battery!

#### Check Battery

- BATTERY MAY BE SHIPPED WITHOUT BATTERY ACID! Your local auto parts store will have battery acid available. Use caution when filling battery. Fill to the "full" line on the battery. Follow all safety directions on the battery acid container!

IMPORTANT ! IMPORTANT ! IMPORTANT ! IMPORTANT ! IMPORTANT

# OPERATION OF THE GENERATOR/WELDER

## CAUTION!

DO NOT start or stop the engine with electrical loads connected to the receptacles. Be certain connected devices are OFF before connecting or disconnecting.

## DANGER!

DO NOT run generator indoors or in poorly ventilated areas. Engine exhaust contains carbon monoxide which is an odorless, deadly gas.

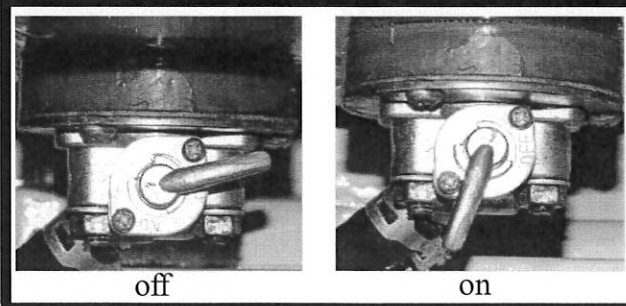
## WARNING!

To avoid burns, avoid muffler and nearby areas.

## Starting the Engine - Recoil starting

- Be Sure all loads are unplugged from the generator before attempting to start it.
- Place unit at a level position.
- Turn fuel cock to the on position (figure #3).
- Turn the key switch to the "RUN" position and move the red engine speed lever to the "RUN" position (push to the right, it will click into place).
- Push the compression release switch, located on the top of the generator, to the down position (figure #4). It is important to do this. It will be too hard to pull the recoil start handle if you do not.
- Pull Starter Handle slowly until you feel some resistance. Then pull cord out with a rapid, full arm stroke. Always let the rope return slowly. Never allow the rope to 'snap back' against the starter.

Figure #3 - Fuel Cock Positions



## Starting the Engine - Electric starting

- Be Sure all loads are unplugged from the generator/welder before attempting to start it.
- Place unit in a level position.
- Turn fuel cock to the on position. Reach under the fuel tank, on the left hand side, locate the fuel cock and turn the lever to the down position).
- Move the engine speed lever to the "RUN" position .
- Turn the key clockwise to the "START" position.
- As soon as the engine starts, let go of the key. The key will return to the "ON" position.
- If the engine does not start after 10 seconds, wait about 15 seconds before attempting to start it again. **If starting motor is run for too long it may cause the battery to become weak.**

**MAKE SURE THAT BATTERY FLUID HAS BEEN ADDED!**

**BATTERY MAY BE SHIPPED WITHOUT FLUID.**

**IF STARTING ENGINE FOR FIRST TIME, ALLOW IT TO RUN FOR 5 MINUTES BEFORE CONNECTING ANY ELECTRICAL LOADS!**

Figure #4 - Compression Release Switch



# OPERATION OF THE GENERATOR

## Starting the engine

- Always check the oil level and air filter before starting the engine. This unit is equipped with a low oil shutdown system.
- NOTE:  
(If starting manually).  
Do not allow the handle grip to snap back against the engine. Always return it gently to prevent damage to the starter.
- NOTE:  
(If electric starting).  
Release key and allow it to return to the "ON" position as soon as engine starts. Key must be in the "ON" position for generator to run.
- NOTE:  
Allow generator to settle. Run for at least 3 minutes, before connecting any electrical loads or appliances. Failure to do so may result in generator damage!

## Connecting electrical loads

- Let engine stabilize and warm up for at least 3 minutes.
- Make sure devices to be connected are in good working order and in the "OFF" position before connecting to the generator.
- Make sure to plug in desired devices into the correct receptacle. **Make sure that the voltage selector switch is on the right setting.**
- DO NOT connect 240 Volt loads to the 120 Volt duplex receptacles.
- DO NOT connect 3 phase loads to the generator.
- DO NOT connect 50 Hz loads to the generator.
- DO NOT overload the generator. Add up the rated Watts of all loads to be connected. This total should not exceed the total watts of the generator.

## Stopping the engine

- Turn off all electrical devices connected to the generator.
- Turn off the main breaker on the receptacle panel. Unplug all devices from the generator.
- **WARNING:**  
**DO NOT start or stop generator with electrical devices plugged in.**
- Allow the generator engine to run at a 'No Load' condition for several minutes to stabilize internal engine temperature before stopping
- Turn key to the "OFF" position.
- Close the fuel cock valve.

## Generator maintenance

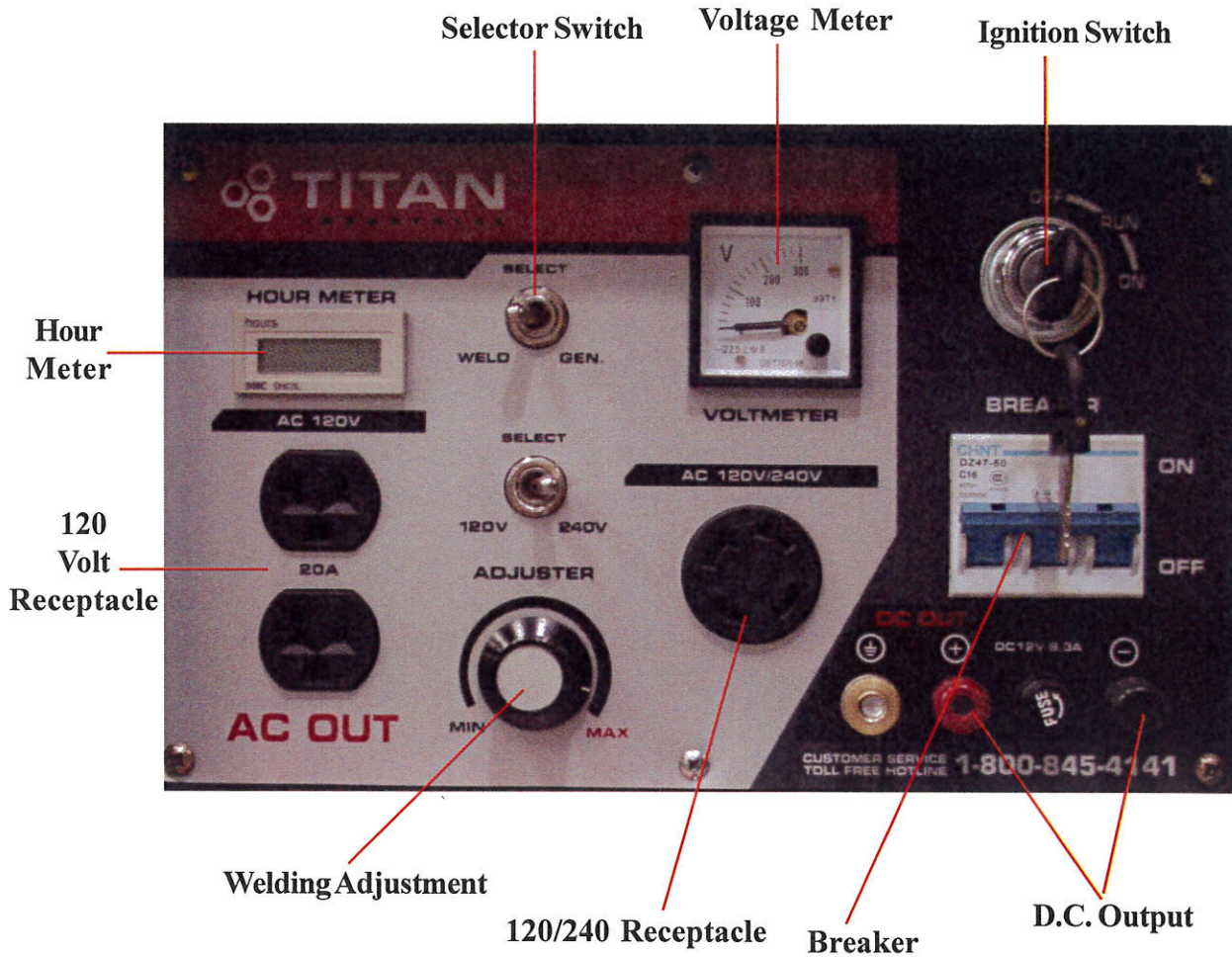
(see maintenance table for list).

- Keep the generator clean and dry. Use a damp cloth to clean exterior surfaces. Remove caked on dirt with a soft brush.
- Never spray with water. Water can contaminate the engine fuel system and cause serious problems in the generator.
- **USE DIESEL FUEL ONLY!**  
Never use gasoline, alcohol, or blended fuel (gasohol, ethanol, or methanol). They will damage a diesel engine and void the warranty.
- Damage may occur if engine or carburetor cleaning products are used.

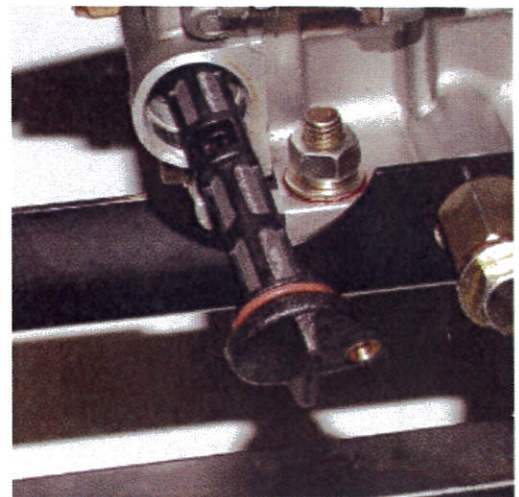
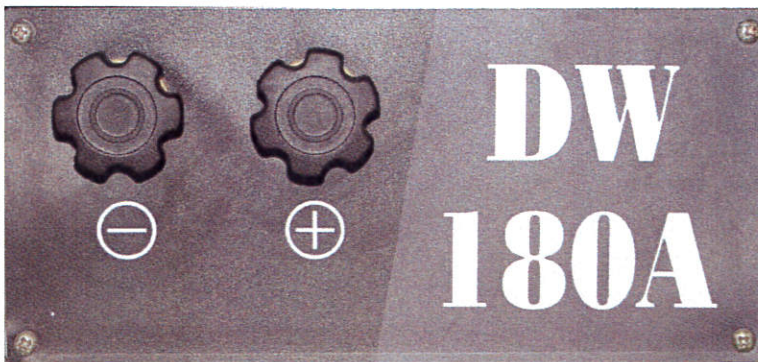
## Storage

- **IMPORTANT:**  
Empty fuel system if unit is to be stored for 30 days or more. This will help prevent gum deposits from forming in fuel system such as the injector fuel filter, fuel pump, fuel hose, and fuel tank during storage.

# RECEPTACLES/SELECTORS



## WELDING LEAD CONNECTIONS



OIL FILTER

***Clean/Change filter after the first 5 hours of operations.***

Change oil every 30 days, or sooner in adverse conditions. Check oil filter each and every time oil is changed. Failure to do so, will cause engine damage and void the warranty.

## Wattage Reference Guide

Device	Running Watts	Device	Running Watts
*Air Conditioner (12,000 BTU)	1700	Impact Wrench	500
Battery Charger (20 Amp)	500	*Jet Pump	800
Belt Sander (3")	1000	Lawn Mower	1200
Chain Saw	1200	Light Bulb	100
Circular Saw (6-1/2")	800 to 1000	Microwave Oven	700
Coffee Maker	1000	*Milk Cooler	1100
Compressor (1 HP)	2000	Oil Burner on Furnace	300
Compressor (3/4 HP)	1800	Oil Fired Space Heater (140,000 BTU)	400
Compressor (1/2 HP)	1400	Oil Fired Space Heater (85,000 BTU)	225
Curling Iron	700	Oil Fired Space Heater (30,000 BTU)	150
*Freezer	500	*Airless Paint Sprayer (1/3 HP)	600
Disc Sander (9")	1200	Handheld Airless Paint Sprayer	150
Edge Trimmer	500	Radio	50 to 200
Electric Nail Gun	1200	Refrigerator	600
Electric Range (one element)	1500	Slow Cooker	200
Electric Skillet	1250	*Submersible Pump (1-1/2 HP)	2800
*Furnace Fan (1/3 HP)	1200	*Submersible Pump (1 HP)	2000
Hair Dryer	1200	*Submersible Pump (1/2 HP)	1500
Hand Drill (1")	1100	Sump Pump	600
Hand Drill (1/2")	750 to 1000	*Table Saw (10")	1750 to 2000
Hand Drill (3/8")	500	Television	200 to 500
Hand Drill (1/4")	250	Weed Trimmer	500

**\*Allow 3 times the listed Watts for starting these devices  
These wattages shown are approximate and may vary with each specific device**

### WARNING:

**Factory warranty is voided if fuel, other than specified diesel fuel, is used  
in this engine, refer to owners manual for fuel.**

## Maintenance Guide

	DAILY	EVERY MONTH/ 20 HRS	EVERY 3 MONTHS/ 100 HRS	EVERY 6 MONTHS/ 500 HRS
Check/Refill Fuel	X			
Drain fuel from tank		When stored longer than 60 days		
Check/Refill Oil	X			
Check for oil leakage	X			
Check battery fluid		X		
Change oil		*		
Clean/Replace oil filter		X		
Replace air filter		X* (Replace @ 500 Hours) X*		
Clean/Replace fuel filter				X

\*First oil change should be after 5 hrs. of use. After initial break-in period change oil every 30 days or sooner, if under adverse conditions.

X\* Air filter may need to be replaced frequently, due to adverse conditions. Check filter frequently.



# TROUBLESHOOTING

Problem	Cause	Solution
Engine is running but no power output is available.	<ol style="list-style-type: none"> <li>1. Circuit breaker is open.</li> <li>2. Poor connection or defective cord set.</li> <li>3. Connected device is bad.</li> <li>4. Fault in generator.</li> </ol>	<ol style="list-style-type: none"> <li>1. Reset the circuit breaker.</li> <li>2. Check &amp; repair.</li> <li>3. Connect another device that is in good condition.</li> <li>4. Contact service center.</li> </ol>
Engine runs good until loads are connected, then bogs down.	<ol style="list-style-type: none"> <li>1. Short circuit in a connected load.</li> <li>2. Overloaded generator.</li> <li>3. Engine speed is too slow.</li> <li>4. Short in generator circuit.</li> </ol>	<ol style="list-style-type: none"> <li>1. Disconnect shorted load.</li> <li>2. See 'Connecting Electrical Loads' section of manual.</li> <li>3. Contact service center.</li> <li>4. Contact service center.</li> </ol>
Engine will not start or engine starts but runs rough.	<ol style="list-style-type: none"> <li>1. On/Off Switch is turned 'OFF'.</li> <li>2. Battery is dead</li> <li>3. Dirty air cleaner.</li> <li>4. Out of diesel fuel.</li> <li>5. Stale diesel fuel.</li> <li>6. Not enough speed or force is used for recoil start.</li> <li>7. Water in diesel fuel.</li> <li>8. Speed control is not set to "RUN".</li> <li>9. Low oil level.</li> <li>10. Oil nozzle is dirty.</li> <li>11. Engine has lost compression.</li> </ol>	<ol style="list-style-type: none"> <li>1. Turn On/Off Switch to 'ON'.</li> <li>2. Charge or replace it.</li> <li>3. Clean air filter</li> <li>4. Fill fuel tank.</li> <li>5. Drain fuel tank and refill.</li> <li>6. Read and follow directions.</li> <li>7. Drain and refill tank.</li> <li>8. Move speed control to "RUN" position.</li> <li>9. Add oil to proper level.</li> <li>10. Clean oil nozzle.</li> <li>11. Contact service center.</li> </ol>
Engine shuts down during operation.	<ol style="list-style-type: none"> <li>1. Out of diesel fuel.</li> <li>2. Fault in engine.</li> </ol>	<ol style="list-style-type: none"> <li>1. Fill fuel tank.</li> <li>2. Contact service center</li> </ol>
Engine lacks power	<ol style="list-style-type: none"> <li>1. Load is too high.</li> <li>2. Dirty air filter.</li> <li>3. Engine needs to be serviced.</li> </ol>	<ol style="list-style-type: none"> <li>1. See 'Connecting Electrical Loads' section of manual.</li> <li>2. Replace the air filter.</li> <li>3. Contact service center.</li> </ol>

**Service**  
1-800-845-4141

**Replacement Parts**  
1-800-845-4141



Toll Free 1-800-845-4141  
www.titanindustrial.com

**Fax**  
864-834-5127

## OUT OF FUEL / START PROCEDURE

1. Close fuel shut off valve under tank.
2. Fill tank with proper fuel to no less than 1/4 full.
3. Remove clamp that holds fuel line to the fuel pump and gently remove the fuel hose.
4. Slowly open shut off valve until fuel appears at the end of hose.
5. Re-install fuel line at pump and secure clamp using needle nose pliers.
6. Put solenoid switch to "run" position and turn ignition switch to start engine. If engine fails to start, repeat #3.
7. If engine fails to start, after a reasonable attempt, bleed the fuel pump, using the following procedure. Loosen the fuel pump line using a 17mm wrench. Turn ignition and check for fuel coming from fuel pump. Contain any spilled fuel during this procedure. Maintain solenoid in "run" position during this procedure.
8. At the appearance of fuel, re-install and tighten fuel line. Start the engine using the above procedure.

If the problem continues, Call 1-800-845-4141, a factory service representative will assist.



## TG6500DW Diesel Generator/Welder

P.O.Box 791, Travelers Rest, S.C. 29690  
Phone 864-834-7212  
Service/Replacement Parts 800-845-4141

# Titan Industrial TG 6500DW



## Generator

Type	Voltage Regulation
Wound Stator and Rotor	Engine Speed Control System

## 120 Volts AC

Frequency	Rated Power	Voltage	Rated Current
60Hz	3600/4800	120V	30A

## 240 Volts AC

Frequency	Rated Power	Voltage	Rated Current
60Hz	3600/4800	240V	15A

## Engine

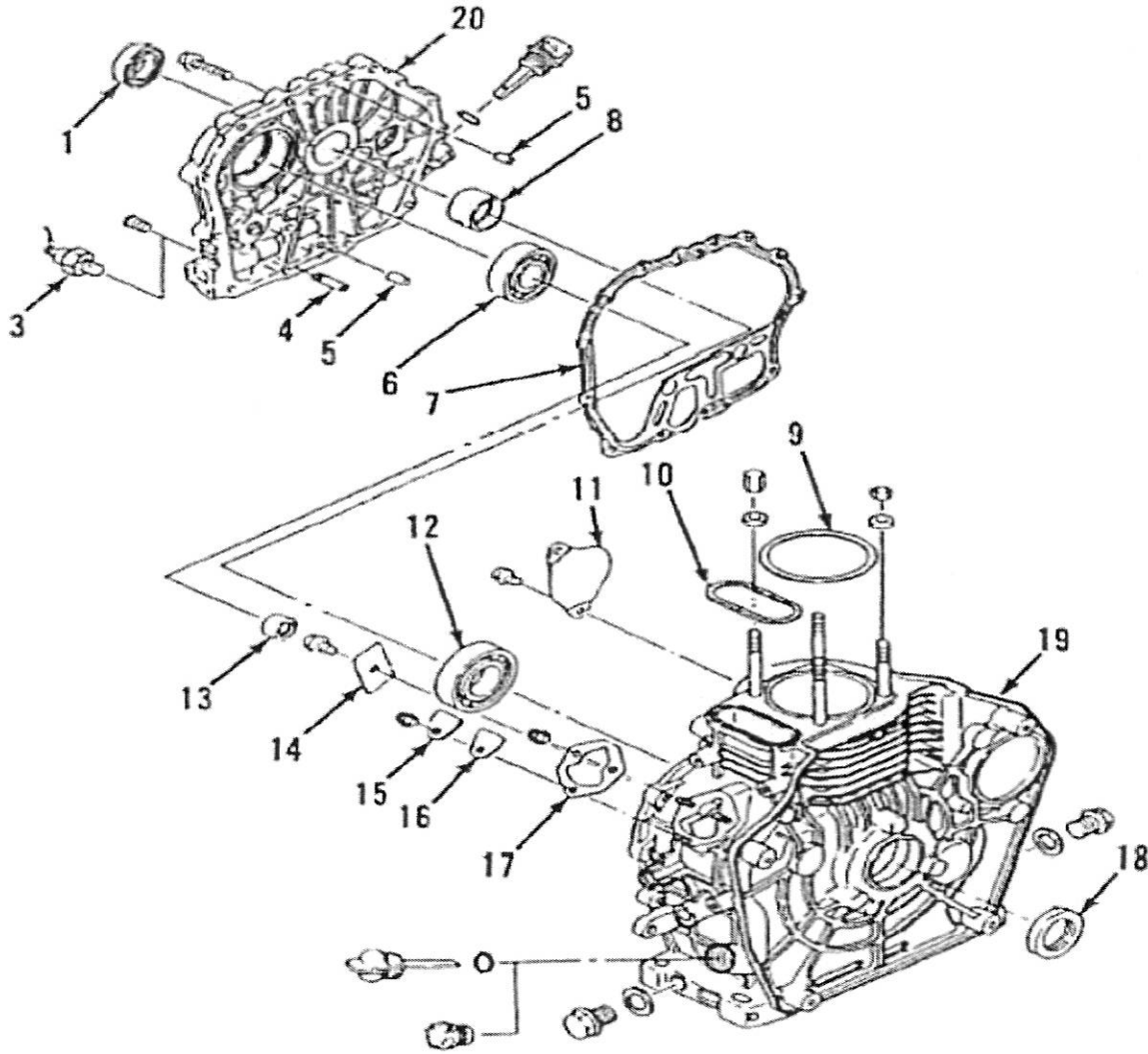
Type	Air Cooled Gas Diesel Engine
Model	TG 6500DW
Horse Power	10 HP
Fuel	Diesel
Fuel Capacity	3.3 Gallons
Ignition System	Electric Start / Manual
Hours of Operation @ Full Load	12 Hours
Dimensions (inches)	30.3" x 22" x 29.5"
Net Weight	350 LBS
RPM	3600

## Welder

Operating Voltage / Rated Current		25V - 160A DC
Current adjustment Scope		50A - 180A

Titan Industrial  
PO Box 791  
Travelers Rest, SC 29690  
Phone: (864) 834-7212  
Toll Free: 888-828-8126  
[www.titanindustrial.net](http://www.titanindustrial.net)

# 1. Cylinder Block Assembly



## Part Name

## Titan Part #

## Part Name

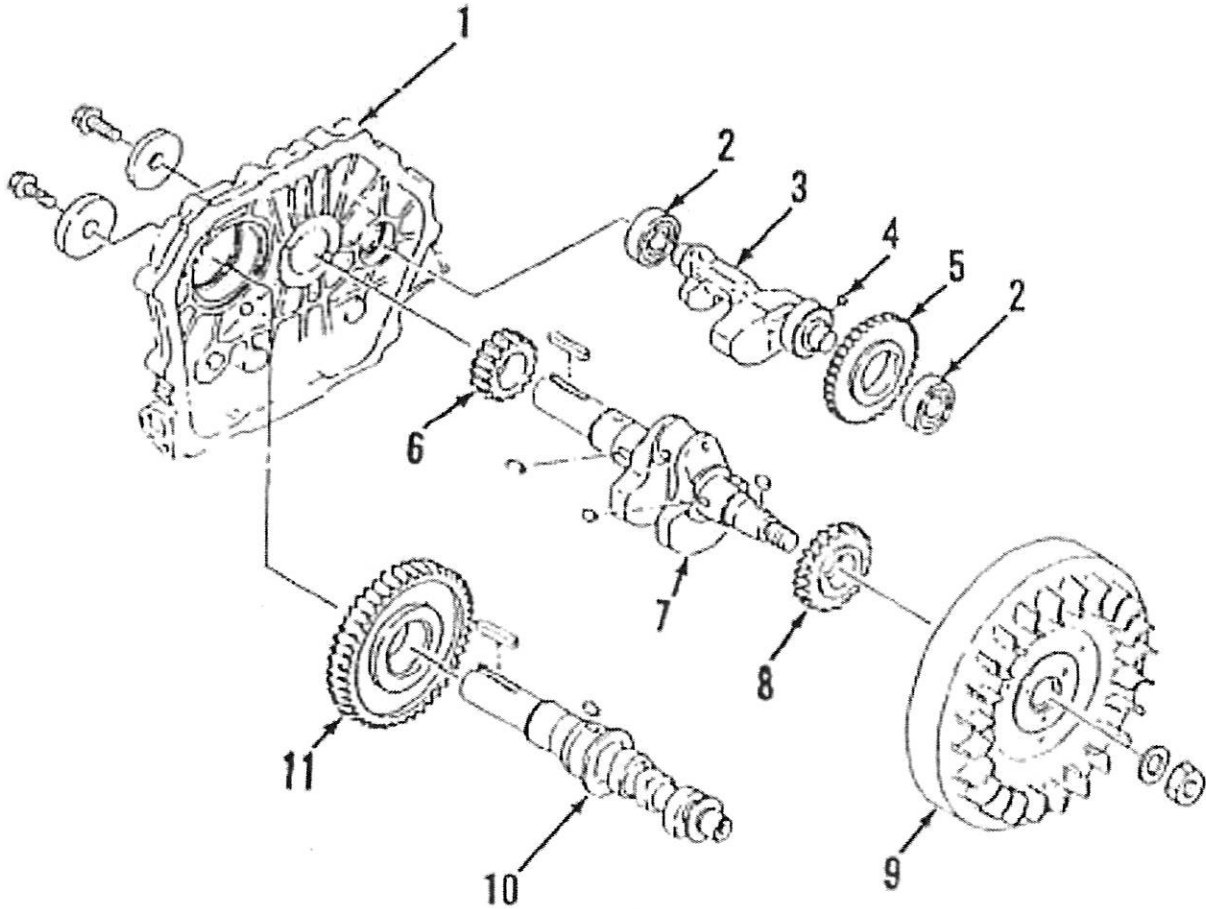
## Titan Part #

1. PTO Seal	LCT-7552
3. Oil Sensor	LCT-016
4. Oil Pipe	LCT-7528
5. Dowel Pins	LCT-7528
6. Cam Shaft Bearing	LCT-7528
7. Crank Case Cover Gasket	LCT-7529
8. Main Bearing	LCT-7557
9. Cylinder Head Gasket	LCT-7520
10. Push Rod O-ring	LCT-7513
11. Starter Cover Plate	N/A

12. Crank Shaft Bearing	LCT-7515
13. Cam Shaft Bearing	LCT-7514
14. Bearing Retainer Plate	LCT-7543
15. Fuel Pump cover	LCT-7537
16. Fuel Pump Gasket	LCT-7537
17. Fuel Pump Shims	LCT-7536
18. Crank Shaft Oil Seal	LCT-7552
19. Cylinder Block	LCT-7553
20. Crank Case Cover	LCT-7528

Some Parts Sold As Assemblies

## 2. Crank Shaft Assembly



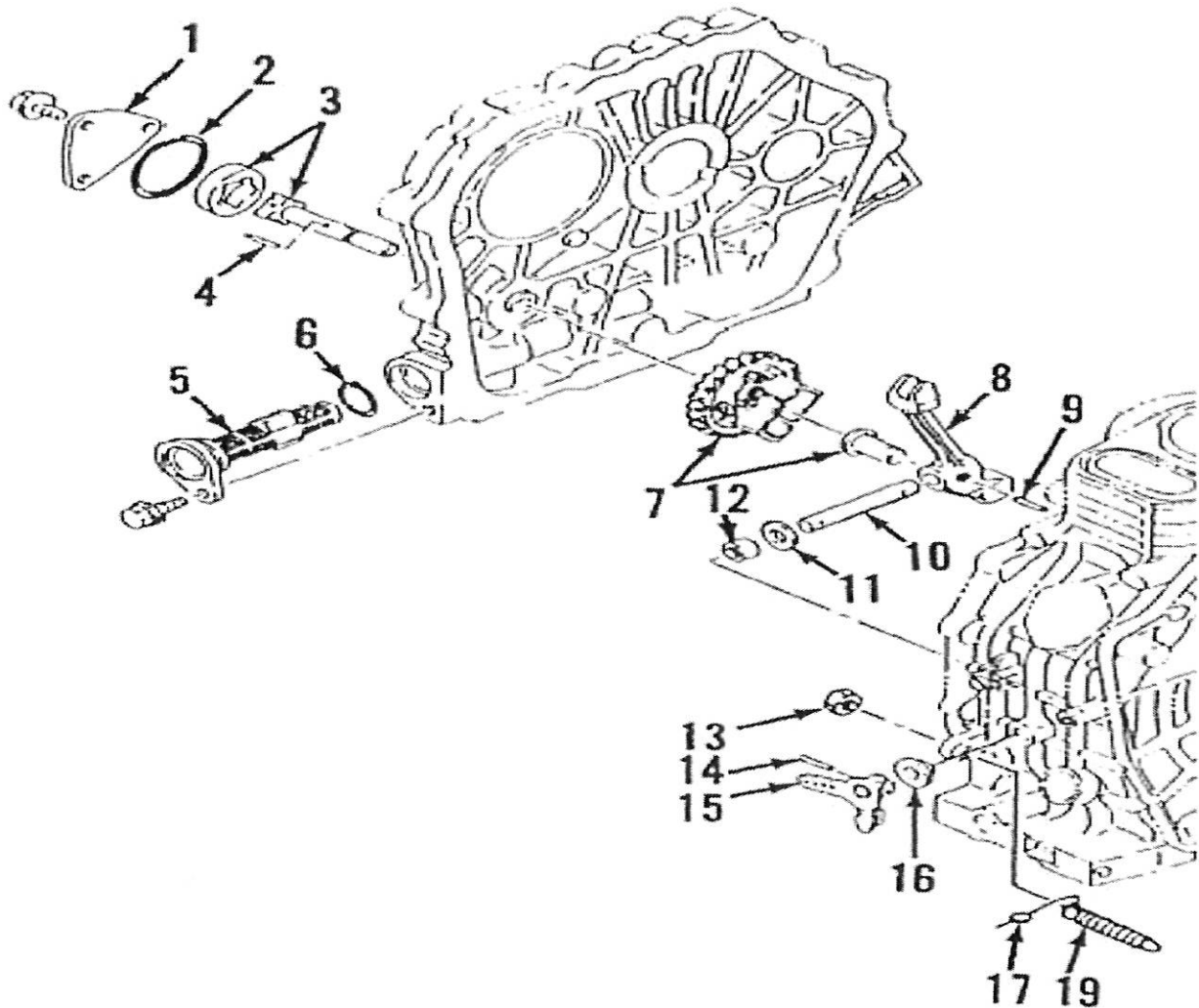
### Part Name

### Titan Part #

1. Crank Case Cover	LCT-7520
2. Balancer Shaft Bearing	LCT-7522
3. Balancer Shaft	LCT-7522
4. Key	LCT-7522
5. Balancer Shaft Gear	LCT-7522
6. Camshaft Drive Gear	LCT-7515
7. CrankShaft	LCT-7515
8. Balancer Shaft Drive Gear	LCT-7515
9. Flywheel	LCT-7551
10. Camshaft	LCT-7514
11. Cam Shaft Drive Gear	LCT-7514

Some Parts Sold As Assemblies

### 3. Governor Gear Assembly



#### Part Name                      Titan Part #

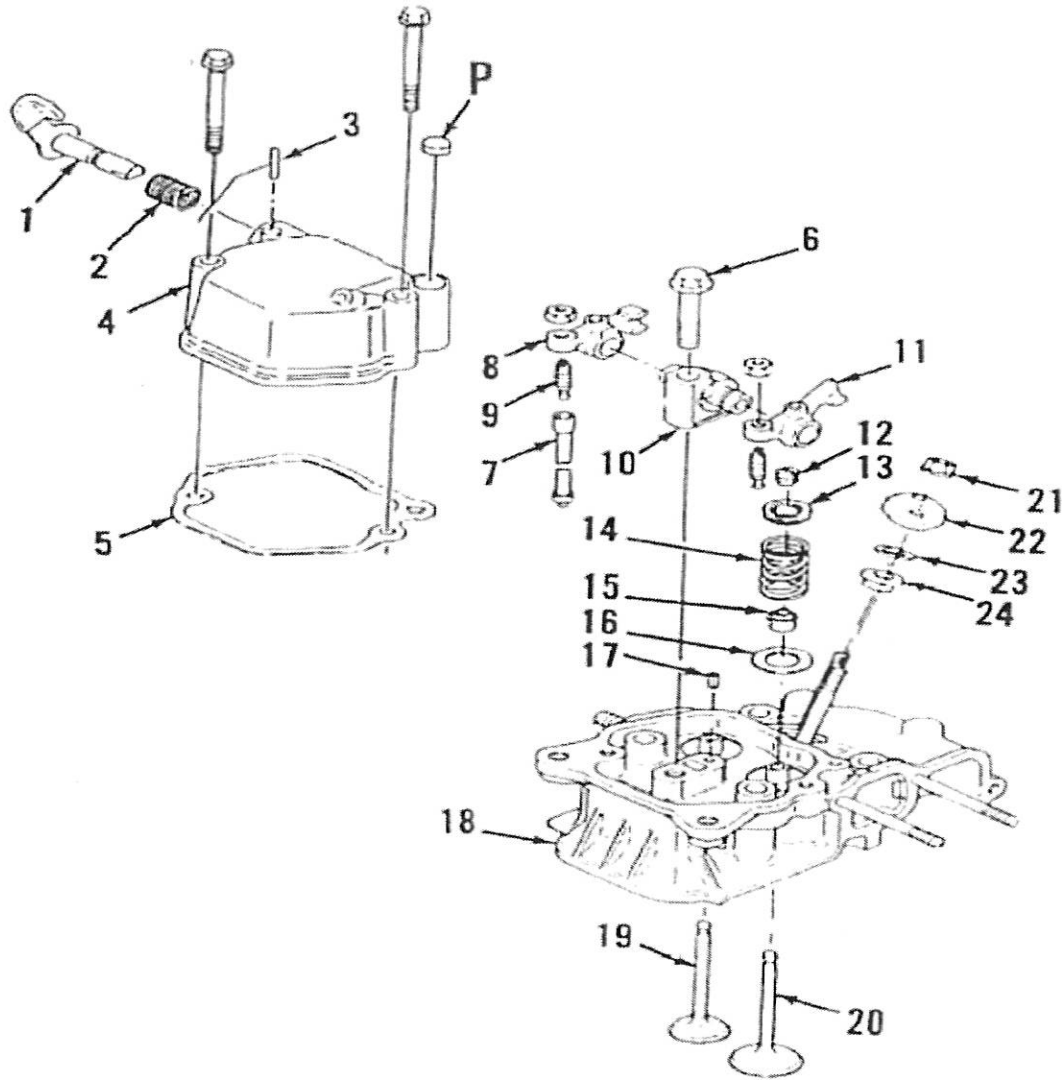
1. Oil Pump	LCT-7522
2. Oil Pump O-ring	LCT-7527
3. Oil Pump Rotor	LCT-7523
4. Oil Pump Drive Pin	LCT-7523
5. Oil Filter\Screen	LCT-015
6. O-Ring	LCT-015
7. Governor Assembly	LCT-7523
8. Governor Arm	LCT-7525
9. Dowel Pin	LCT-7525

#### Part Name                      Titan Part #

10. Governor Arm Shaft	LCT-7525
11. Flat Washer	N/A
12. Governor Shaft Bearing	N/A
13. Lock Nut	LCT-7526
14. Dowel Pin	LCT-7525
15. Governor Arm	LCT-7525
16. Thrust Bearing	LCT-7525
17. Seal Wire	N/A
19. Governor Stop	LCT-7526

Some Parts Sold As Assemblies

## 4. Head Asssembly



### Part Name

### Titan Part #

1. Decompression Lever	N/A
2. Return Spring	N/A
3. Retaining Pin	N/A
4. Valve Cover	LCT-7530
5. Valve Cover Gasket	LCT-7531
6. Rocker Pedestal Bolt	LCT-7541
7. Push Rod	LCT-7512
8. Exhaust Rocker Arm	LCT-7541
9. Adjusting Screw	LCT-7541
10. Rocker Arm Pedestal	LCT-7541
11. Intake Rocker Arm	LCT-7541
12. Split Valve Locks	LCT-7511

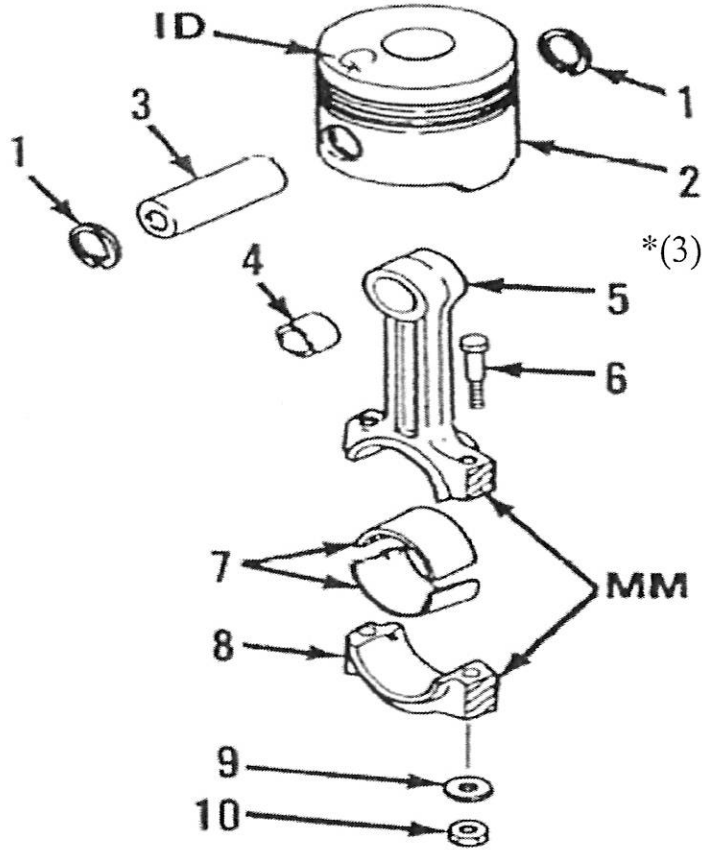
### Part Name

### Titan Part #

13. Valve Keepers	LCT-7511
14. Valve Spring	LCT-7511
15. Valve Guide Seal	LCT-7511
16. Spring Seat Washer	N/A
17. Pedestal Dowel Pin	LCT-7501
18. Cylinder Head	LCT-7501
19. Exhaust Valve	LCT-7511
20. Intake Valve	LCT-7511
21. Injector Clamp Nuts	LCT-7504
22. Injector Clamp Plate	LCT-7504
23. Injector Spacer	N/A
24. Injector Gasket	LCT-7503

Some Parts Sold As Assemblies

# 5. Piston Assembly

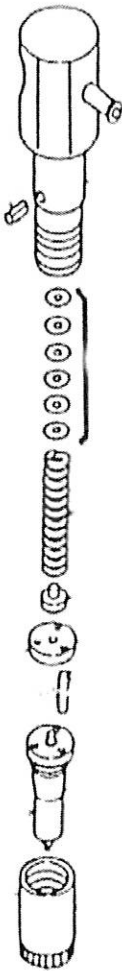


\*(3) Piston Rings Not Shown  
Part # LCT-5519

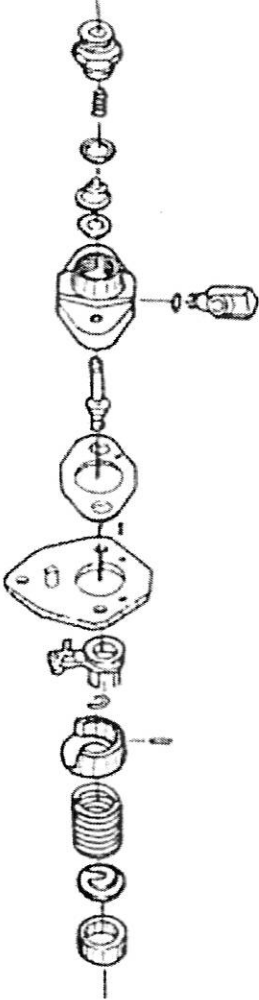
<u>Part Name</u>	<u>Titan Part #</u>	<u>Part Name</u>	<u>Titan Part #</u>
1. Snap Rings	LCT-7516	6. Rod Cap Bolt	LCT-7517
2. Piston	LCT-7516	7. Rod Sleeve Bearing	LCT-7517
3. Piston Pin	LCT-7516	8. Rod Cap	LCT-7517
4. Pin Bushing	LCT-7517	9. Washer	NA
5. Connecting Rod	LCT-7517	10. Nut	NA



# 6. Fuel Injection System



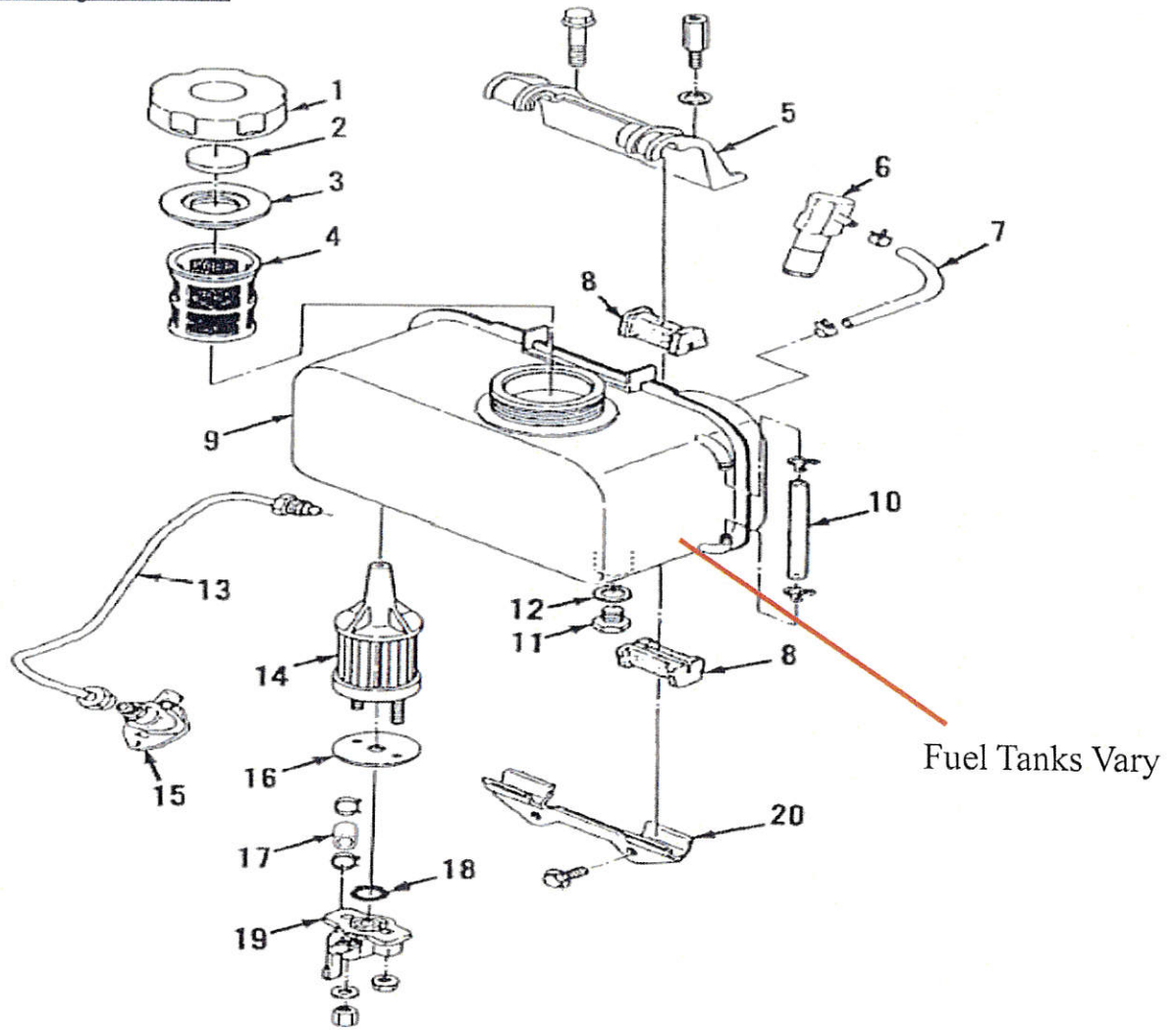
Fuel Injector    LCT-7502



Fuel Pump    LCT-7535

These Parts Sold As Assemblies

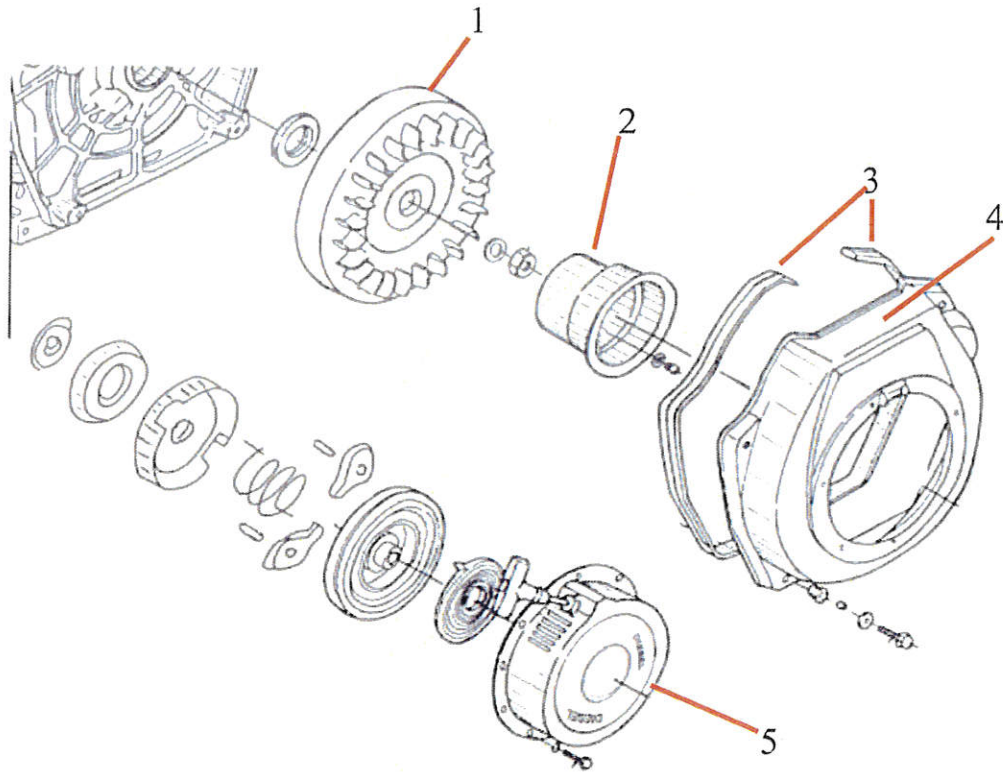
# 7. Fuel System



<u>Part Name</u>	<u>Titan Part #</u>	<u>Part Name</u>	<u>Titan Part #</u>
1. Fuel Cap	LCT-009	11. Drain Plug	N/A
2. Fuel Cap Seal	LCT-009	12. Gasket	N/A
3. Fuel Cap Gasket	LCT-009	13. Fuel Injector Line	LCT-7550
4. Filter Screen	LCT-009A	14. Fuel Filter	LCT-010
5. Mounting Clamp	NA	15. Fuel Injector Pump	LCT-7535
6. Fuel Injector	LCT-7502	16. Fuel Filter Plate	LCT-10A
7. Fuel Return line	LCT-057	17. Rubber Fuel Line	LCT-056
8. Vibration Dampers	NA	18. O-ring	LCT-011
9. Fuel Tank	LCT-008	19. Fuel Shut Off Valve	LCT-012
10. Fuel Gauge	LCT-008A	20. Mounting Clamp	N/A

Some Parts Sold As Assemblies

## 8. Starter Assembly

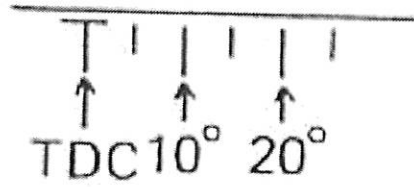
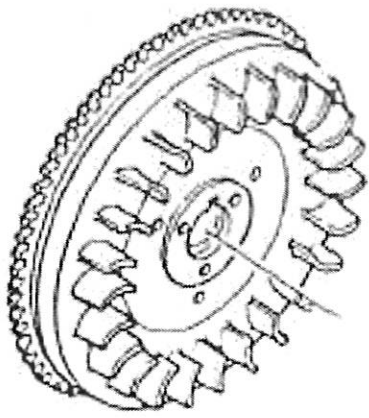


### Part Name

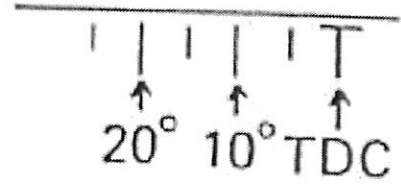
### Titan Part #

- 1. Fly Wheel
- 2. Recoil Cup
- 3. Blower Housing Gaskets
- 4. Blower Housing
- 5. Recoil Assembly

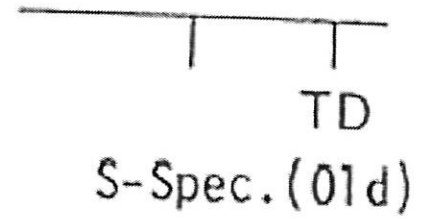
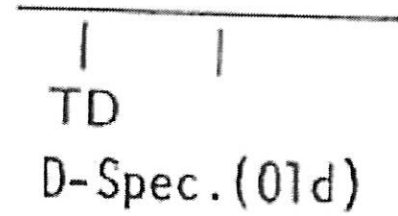
LCT-7551  
LCT-7544  
LCT-7546  
LCT-7545  
LCT-7542



D-Spec.Engine



S-Spec.Engine



Engine Timing  
Reference Information

